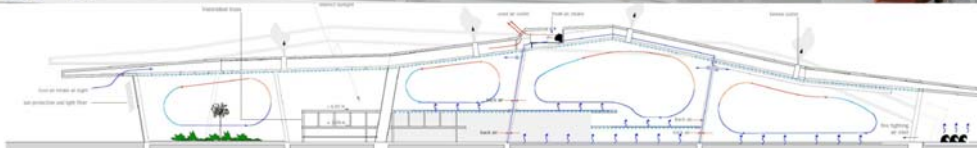


<b>project name</b>	Khartoum New International Airport (KNIA)		
	Building services design		
<b>owner</b>	Project Implementation Unit for KNIA, Khartoum (Sudan)		
<b>prime consultant</b>	Dorsch Consult Airports, Munich (Germany)		
<b>location</b>	Khartoum (Sudan)		
<b>project duration</b>	begin	october 2003	
	end	december 2006	

The airport of Khartoum is located close to city center and a permanent peril. Possibilities for airport extension do not exist due to the rapid growing city.

It is planned to develop a new Greenfield airport, for 6.5 million passengers per year, some 40 km south of Khartoum.



view of land side hall (leit-werk ltd., London) (t), HVAC concept (down)

### responsibilities

master planning, coordination of design and specification writing for building services for Main Passenger Terminal, President Terminal, KNIA City Airport complex embracing hotel, administration building, control tower, fire department stations, ancillary buildings, mosque:

- plumbing and fire fighting, sprinkler system,
- concrete core cooling for Passenger Terminal and Mosque
- HVAC systems

coordination of turn key tender preparation and bid evaluation acc. to FIDIC "silver book"

